

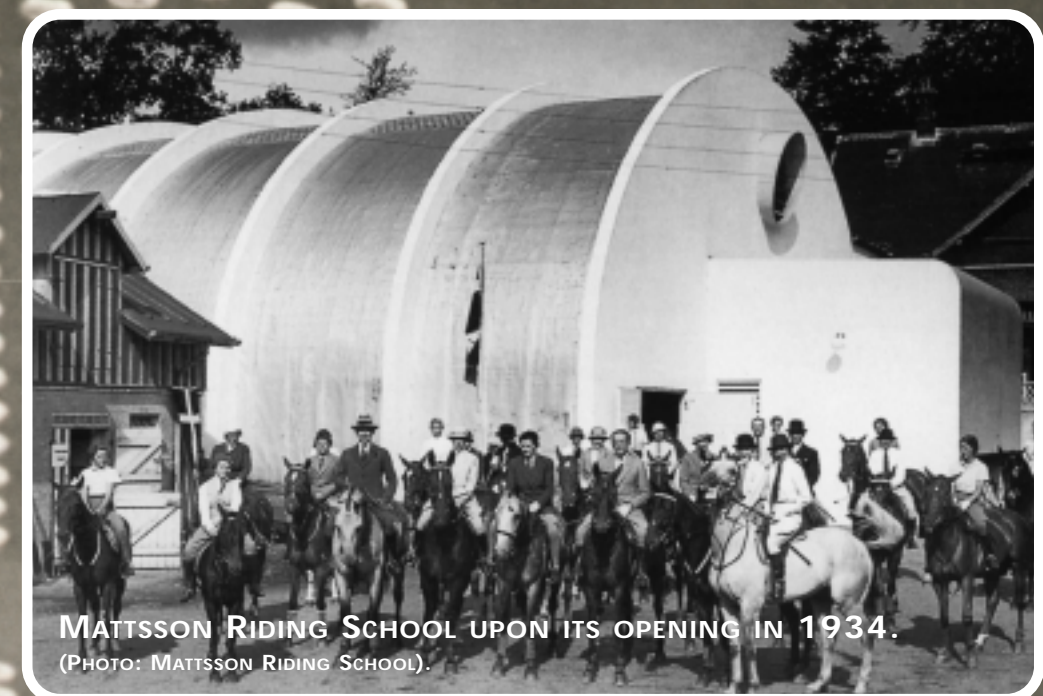
AN APPENDAGE TO THE OVERALL BEACH COMPLEX IS THE MATSSON RIDING SCHOOL HALL, AFTER NEARLY 70 YEARS STILL HOME TO THE SAME RIDING SCHOOL, FOUNDED BY AXEL MATSSON ONE OF DENMARK'S FIRST STUNTMEN.

THE RIDING IS A VAULTED CONCRETE STRUCTURE OF SHORT SHELLS SET BETWEEN 10 ARCHES.

ORIGINALLY 8600 ROUND GLASS BLOCKS WERE INCORPORATED IN THE CONCRETE ROOF SHELLS, PROVIDING THE ARENA WITH DAYLIGHT. THE RIDING HALL IS A GOOD EXAMPLE OF MODERN MOVEMENT ARCHITECTURE SET WITHIN A TRADITIONAL CONTEXT OF BUILDINGS.

THE STRUCTURAL MAINTENANCE OF THIS RIDING HALL HAS BEEN FACED WITH EXTREME CLIMATIC CHALLENGES. THE MOISTURE AND SWEAT GENERATED BY THE HORSES, AND THE TEMPERATURE SWINGS THAT THIS UNHEATED BUILDING ARE SUBJECT TO HAVE HAD AN AGGRESSIVE IMPACT ON THE CONCRETE CONSTRUCTION. THE GLASS BLOCK CEILING SKYLIGHTS HAVE LONG SINCE BEEN LOST TO THIS DETERIORATION. RECENT RENOVATION HAS PRESERVED THE GENERAL CHARACTER OF THE ORIGINAL STRUCTURE. VENTILATION STILL REMAINS AN ISSUE TO THE SOUND STATE OF THIS BUILDING.

THE ORIGINAL VENTILATION FITTINGS WERE DESIGNED BY POUL HENNINGSEN.



MATSSON RIDING SCHOOL UPON ITS OPENING IN 1934.  
(PHOTO: MATSSON RIDING SCHOOL).



MATSSON RIDING SCHOOL, UNDER RESTORATION IN 1999.  
(PHOTO: ERVIN POULSEN).



MATSSON RIDING SCHOOL, 2003. (PHOTO: OLA WEDEBRUNN).

# MATSSON'S